
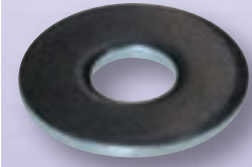



## RONDELLE DIN 9021 B

No. d'article	cote nom.	d1	d2	s	prix/100 pce	
485.0309	<b>M 3</b>	3.2	9.0	0.8	<b>1.30</b>	100
485.0412	<b>M 4</b>	4.3	12.0	1.0	<b>1.30</b>	100
485.0515	<b>M 5</b>	5.3	15.0	1.2	<b>1.85</b>	100
485.0618	<b>M 6</b>	6.4	18.0	1.6	<b>2.45</b>	100
485.0825	<b>M 8</b>	8.4	25.0	2.0	<b>4.35</b>	100
485.1030	<b>M 10</b>	10.5	30.0	2.5	<b>7.70</b>	100
485.1237	<b>M 12</b>	13.0	37.0	3.0	<b>12.80</b>	100




## RONDELLE DIN 9021 B, A2

No. d'article	cote nom.	d1	d2	s	prix/100 pce	
486.0412	<b>M 4</b>	4,3	12,0	1,0	<b>3.10</b>	100
486.0515	<b>M 5</b>	5,3	15,0	1,2	<b>5.70</b>	100
486.0618	<b>M 6</b>	6,4	18,0	1,6	<b>6.90</b>	100
486.0820	<b>M 8</b>	8,4	20,0	1,5	<b>10.50</b>	100
486.0824	<b>M 8</b>	8,4	25,0	2,0	<b>13.90</b>	100
486.1030	<b>M 10</b>	10,5	30,0	2,5	<b>22.90</b>	100
486.1040	<b>M 10</b>	10,5	40,0	1,5	<b>25.90</b>	100
486.1337	<b>M 12</b>	13,0	37,0	3,0	<b>52.00</b>	100
486.1650	<b>M 16</b>	17,0	50,0	3,0	<b>96.00</b>	100



4

## RONDELLE DIN 9021 B, A4

No. d'article	cote nom.	d1	d2	s	prix/100 pce	
487.0515	<b>M 5</b>	5,3	15,0	1,2	<b>8.90</b>	100
487.0618	<b>M 6</b>	6,4	18,0	1,6	<b>11.50</b>	100
487.0824	<b>M 8</b>	8,4	25,0	2,0	<b>25.50</b>	100
487.1030	<b>M 10</b>	10,5	30,0	2,5	<b>44.00</b>	100
487.1337	<b>M 12</b>	13,0	37,0	3,0	<b>98.00</b>	100
487.1650	<b>M 16</b>	17,0	50,0	3,0	<b>a. A.</b>	100



tous les prix sont nets, en FRS, sans TVA