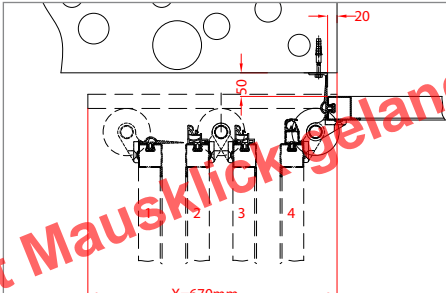


# FALTSCHEMEN & EINBAUBEISPIELE INSTALLATION - EXAMPLES

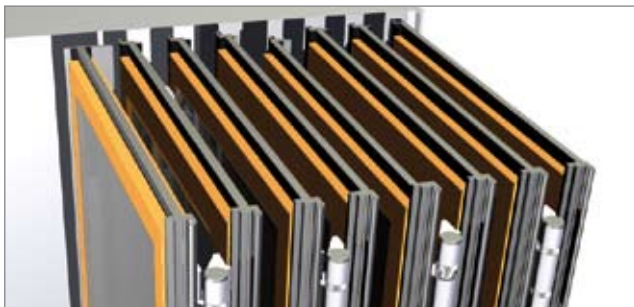
Flügelpaket - Maße im Bahnhofsbereich

sections package – dimensions in the deflection area



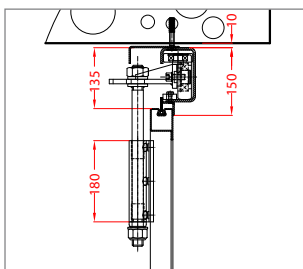
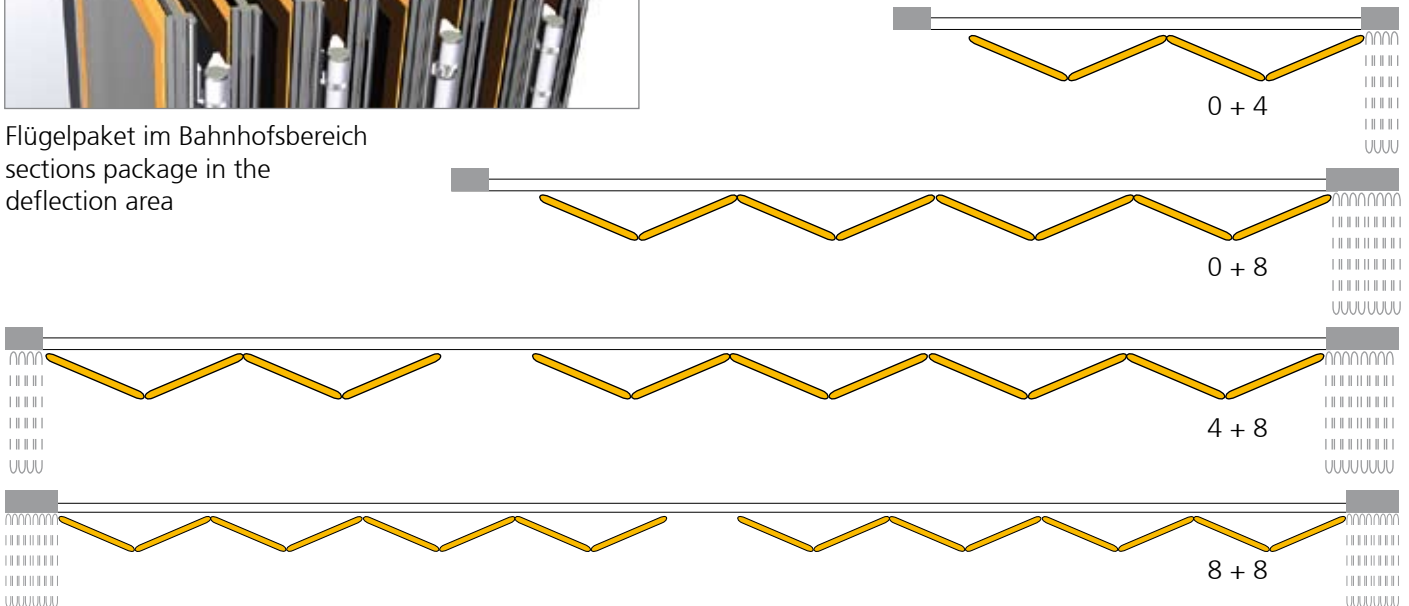
MASS X: Platzbedarf für Bahnhof hinten (ändert sich mit der Flügelanzahl)  
X = required space for deflection area at the back (depends on the number of sections)

3 Flügel: x=550 mm	3 sections: x=550 mm
4 Flügel: x=670 mm	4 sections: x=670 mm
5 Flügel: x=760 mm	5 sections: x=760 mm
6 Flügel: x=880 mm	6 sections: x=880 mm
7 Flügel: x=970 mm	7 sections: x=970 mm
8 Flügel: x=1090 mm	8 sections: x=1090 mm
9 Flügel: x=1180 mm	9 sections: x=1180 mm
10 Flügel: x=1300 mm	10 sections: x=1300 mm
11 Flügel: x=1390 mm	11 sections: x=1390 mm

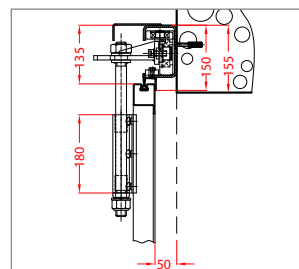


## FALTBEISPIELE - EXAMPLES

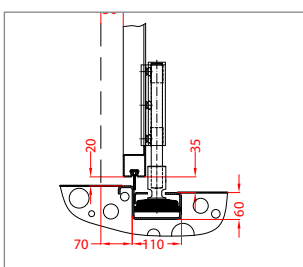
Flügelpaket im Bahnhofsbereich  
sections package in the deflection area



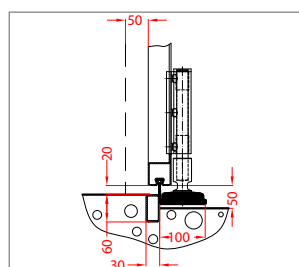
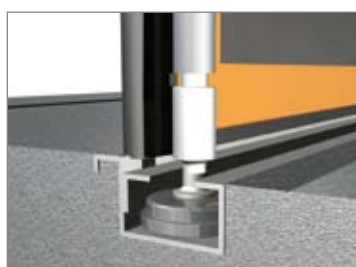
Laufschienenprofil in Laibung - running rail profile – in embrasure



Laufschienenprofil auf Laibung - running rail profile – on embrasure



Versenktebodenschiene - recessed bottom rail



Anschlag Bodenschiene - bottom rail with stop

