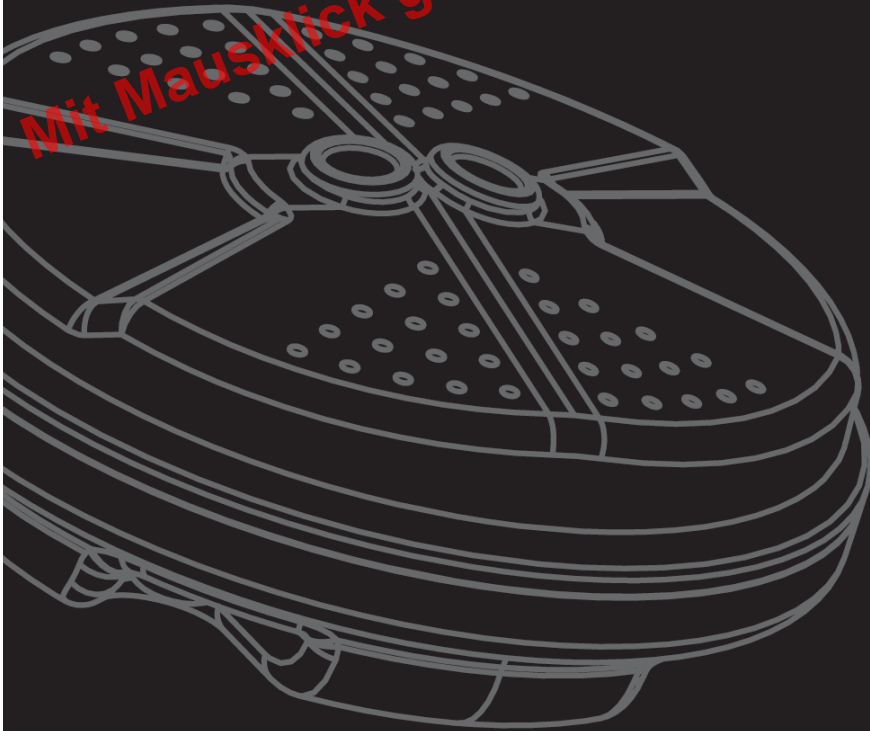




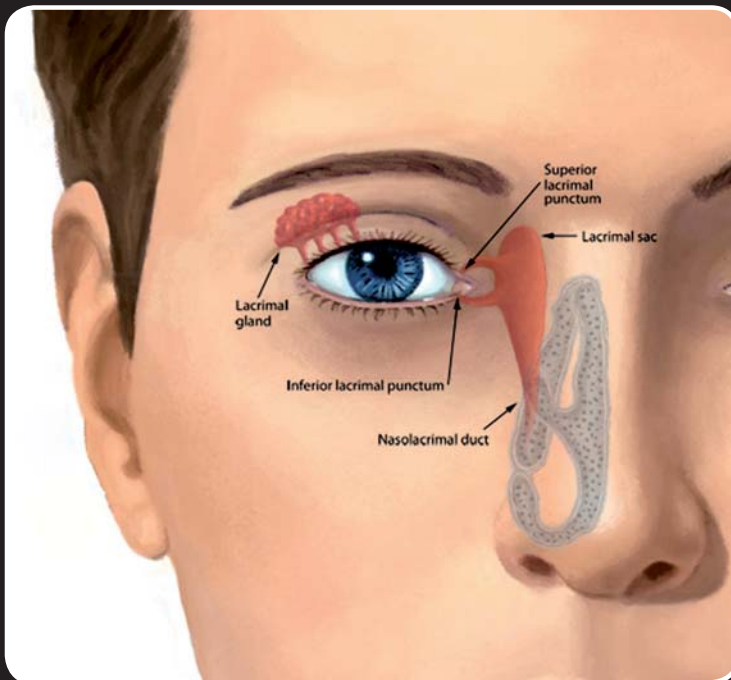
ISO 9001 and TÜV certified EN 15154

»THE LACRIMAL SYSTEM«



ADVANCES IN

Haws emergency equipment provides immediate aid in emergencies in laboratories and industrial facilities.



The human eye is equipped with an automatic lubricating and cleansing mechanism, called the lacrimal system. It consists of the lacrimal gland which produces tears, ducts that channel tears from the lacrimal gland to the ocular surface, and the lacrimal punctum – a drain which channels excess fluids away from the ocular surface. Importantly, the lacrimal punctum drains excess fluids directly into the nasal cavity. This process is the reason why your nose runs when you cry.

If, for example, a chemical is introduced into the eye, nature's own cleansing mechanism can serve to force the contaminant into the nasal cavity, where it can be breathed into the lungs or swallowed. The ideal approach in chemical or particulate injuries is to sweep contaminants away from the lacrimal punctum!

Mit Mausklick gelangen Sie zum [Blätterkatalog]